

HIGH-SECURITY VAN LOCKS



ANTI
PICK

**PICK
RESISTANT**



ANTI
DRILL

**DRILL
RESISTANT**

High-Security Van Locks

4 MILLION UK VAN OWNERS NEED *REAL EXTRA SECURITY*

With tool theft and van break-ins on the rise, **UK van owners want real extra security.** Disec high-security locks are exactly what you need to **help them protect their livelihood.**

Enhanced Security

Magnetic operated and made of stainless steel, Disec locks are extremely tough and resistant to most common forms of attack.

Easy To Fit

You will be able to easily fit the Disec locks to your customers' van. And because you won't need any special preparation, you will quickly be ready for your next job.

Repeat Business

You will maximise your sales. With a security card and an innovative key design, your customers will keep coming back to replace a lost key or get a spare.

Magnetic Key Operated

Almost all the Disec high-security van locks are magnetic-key operated. This means that the set of magnets inside the key and the lock have to pair in order for the lock to turn. This innovative design makes the lock unpickable by using tools commonly found online.

Keyed Alike Overview (off the shelf KA pairs come with two keys per lock)

The DIMG860, DIMG850/850S, DIMG845/845M and the OBD blockers can be keyed alike together.



DIMG860



DIMG845/845M



DIMG850/850S



OBD BLOCKERS

The DIMG840 can only be keyed alike to other DIMG840.



DIMG840

The DIMG790 can only be keyed alike to other DIMG790.



DIMG790

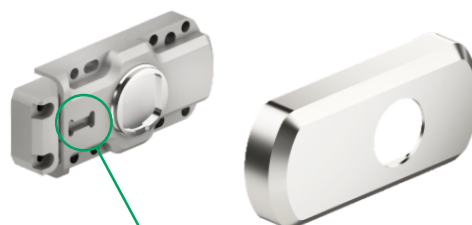
DIMG850/DIMG850S - UNIVERSAL ADDITIONAL SECURITY LOCKS

Available keyed alike to other DIMG850/850s and to:

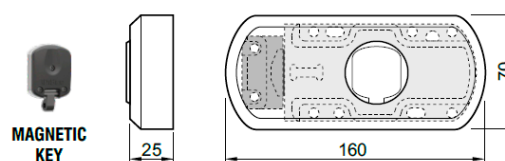
- DIMG845/845M
- DIMG860
- OBD BLOCKERS

DIMG850S
DIMG850

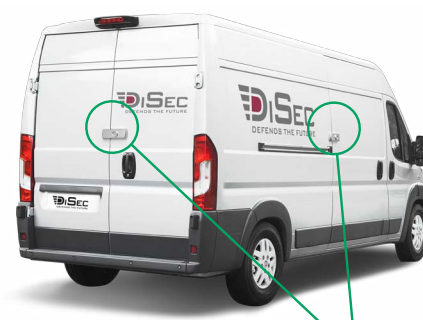
Adjustable Gasket/Drilling
Template included.



ANTI-SAW PROTECTION



MAGNETIC
KEY



POSITION OF LOCKS
ON REAR AND SIDE
DOORS.

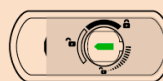
The DIMG850/DIMG850S are **universal additional security locks** that secure the rear and the side door of vans. Surface mounted on the outside of the door, they **can be virtually fitted to any a van.**

Main Benefits:

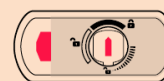
- Made of rust resistant materials.
- A rubber gasket prevents scratches and build-up of dirt inside the lock.
- **Anti-pick** magnetic key design.
- **Drill-resistant core and anti-saw protection.**
- They come with a security card to prevent unauthorised key duplication.
- Standard (DIMG850) or spring latch (DIMG850S) locking mechanisms available.
- Fixings, screws, fitting instructions and drilling template included.
- Supplied with two magnetic keys.
- Available keyed alike.

OPENING-CLOSING POSITIONS

MG850



Neutral (no locking) - opening

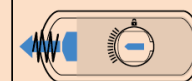


deadlocking bolt "night latch"



spring latch locking
(locks every time the
door is pushed closed)

MG850 S



spring latch locking
(locks every time the
door is pushed closed)



deadlocking bolt "night latch"

Additional Keys:

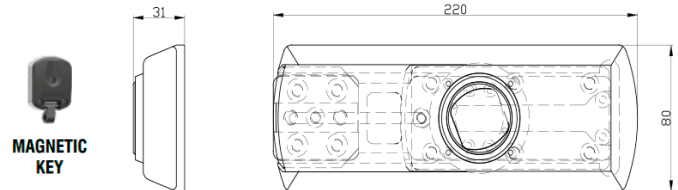
- Additional keys available through our in-house workshop.
- If you want to **gain repeat key business and increase your revenues**, get the Disec magnetic keying kit DIKM0P85.

DIMG860 - UNIVERSAL ADDITIONAL SECURITY LOCK

Available keyed alike to other
DIMG860 and to:

- DIMG845/845M
- DIMG850/850S
- OBD BLOCKERS

**NEW
DESIGN**



DIMG860

Adjustable Template for
non-even doors.



POSITION OF LOCKS
ON REAR AND SIDE
DOORS.

With a **new design that securely covers the locking mechanism**, the DIMG860 boasts exceptional protection against most common forms of attacks.

The DIMG860 is a **universal additional security lock** that secures the rear and the side door of vans. Surface mounted on the outside of the door, it **can be virtually fitted to any a van.**

Main Benefits:

- Made of rust resistant materials.
- **Your lock won't jam** with a V-shaped channel that prevents the build-up of dirt or grit inside the lock.
- **Anti-pick** magnetic key design.
- **Drill-resistant core.**
- **Anti-saw protection.**
- They come with a security card to prevent unauthorised key duplication.
- Fixings, screws, fitting instructions and drilling template included.
- Supplied with two magnetic keys.
- Available keyed alike.

OPTIONAL



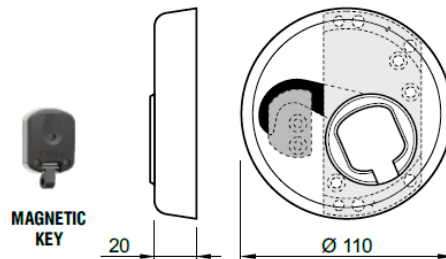
Additional Keys:

- Additional keys available through our in-house workshop.
- If you want to **gain repeat key business and increase your revenues**, get the Disec magnetic keying kit DIKM0P85.

DIMG845/DIMG845M - ADDITIONAL SECURITY LOCKS

Available keyed alike to other
DIMG845/845M and to:

- DIMG850/850s
- DIMG860
- OBD BLOCKERS



DIMG845M
DIMG845



POSITION OF LOCKS
ON REAR AND SIDE
DOORS.

Hard and extremely resistant, the **DIMG845** van lock is the ideal choice to upgrade the security of vans. The **DIMG845M** version has been designed to suit Mercedes Sprinter and VW Crafter rear doors. All you have to do is remove the Mercedes or VW badge on the rear door and the lock will fit neatly into the space.

Main benefits:

- **DIMG845** - Upgrades the security of your van.
- **DIMG845M** - Specifically designed to fit Mercedes Sprinter and VW Crafter vans.
- Exceptionally easy to fit.
- You can fit it to rear and side doors.
- Made of stainless steel, the lock is tough, resistant and weatherproof.
- Anti-pick magnetic key design.

Additional Keys:

- Additional keys available through our in-house workshop.
- If you want to **gain repeat key business and increase your revenues**, get the Disec magnetic keying kit DIKM0P85.

Features:

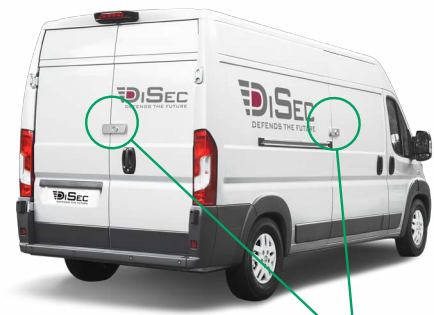
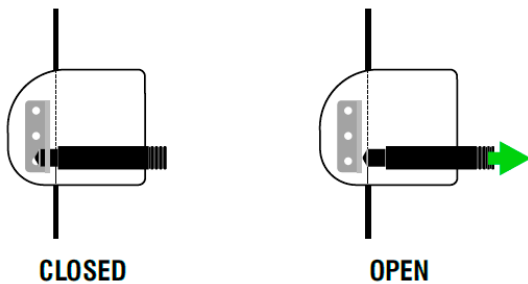
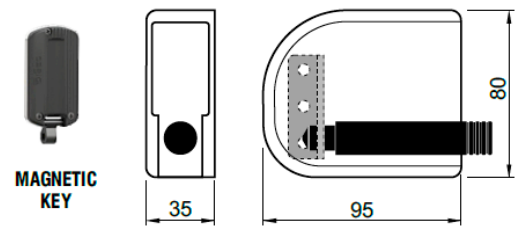
- Available **keyed alike**.
- Supplied with two magnetic keys.

DIMG840 - UNIVERSAL ADDITIONAL SECURITY LOCK

Available **keyed alike** only to other DIMG840.



Magnetic Key



POSITION OF LOCKS ON REAR AND SIDE DOORS.

DIMG840

The DIMG840 is more than one of the most robust solution to secure your customer's van. You can fit it to vans, garage doors, gates etc. What's more? Because it is available **keyed alike**, your customers won't need to carry around a large bunch of keys anymore.

Main benefits:

- With a stainless steel body, the DIMG840 is robust and secure.
- You won't need any special preparation or template to fit the DIMG840.
- You can fit to vans, gates, garage doors and much more.
- Magnetic locking mechanism and keys.

Additional Keys:

- Additional keys available through our in-house workshop.
- If you want to **gain repeat key business and increase your revenues**, get the Disec magnetic keying kit DIKM0P20.

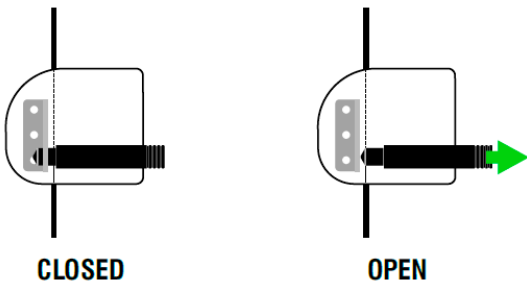
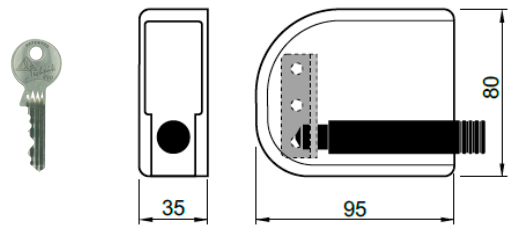
Features:

- Available **keyed alike**.
- You can fit it to vans, garage doors, gates etc.
- Supplied with two magnetic keys.
- PVD tested hardened stainless steel bolt.

DIRIF030 - UNIVERSAL ADDITIONAL SECURITY LOCK



Mechanical
Key



DIRIF030



POSITION OF LOCKS
ON REAR AND SIDE
DOORS.

The DIRIF030 is more than one of the most robust solution to secure your customer's van. Equipped with a 30/10mm single euro cylinder (not included), you can fit it to vans, garage doors, gates etc. What's more? Because it is available **keyed alike**, your customers won't need to carry around a large bunch of keys anymore.

Main benefits:

- With a stainless steel body, the DIRIF030 is robust and secure.
- You won't need any special preparation or template to fit the DIRIF030.
- You can fit to vans, gates, garage doors and much more.



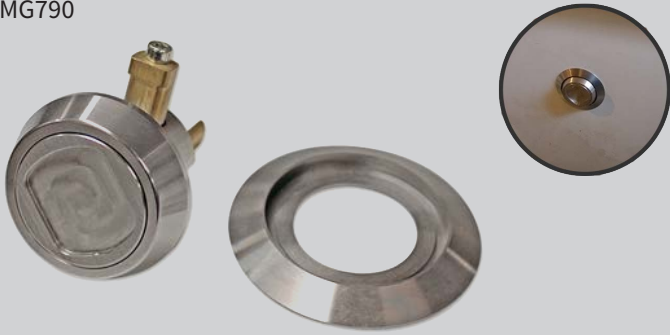
- It works with a 30/10mm single Euro cylinder (not included).
- You can use any 40mm single Euro cylinder with an adjustable cam.

Features:

- Available **keyed alike**.
- You can fit it to vans, garage doors, gates etc.

DIMG790 - FORD TRANSIT CUSTOM RELOCK

DIMG790



Available keyed alike only to other DIMG790.

Made of stainless steel, the DIMG790 is a high-security relock for Ford Transit Custom vans.

Main benefits:

- Direct retrofit for the OEM lock.
- Drill and pick resistant.
- Security rose included.
- Central locking system will still work.
- Comes with a security card
- Supplied with two magnetic keys.

Additional Keys:

- Additional keys available through our in-house workshop.
- If you want to **gain repeat key business and increase your revenues**, get the Disec magnetic key kit DIKM0P55.

DIMG780 - UNIVERSAL SLAM LOCK REPLACEMENT

DIMG780



Available keyed alike only to other DIMG780.

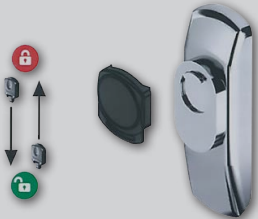
Made of stainless steel, the DIMG780 is a high-security universal retrofit/replacement for slam locks.

Main benefits:

- Simple direct retrofit.
- High-security van lock. Drill and pick resistant.
- Supplied with two magnetic keys.

DIMGSG15 - VAN LOCK CYLINDER GUARD

Available keyed alike only to other DIMGSG15.



The DIMGSG15 fits perfectly on top of the cylinder and protects it against drilling, picking and snapping.

Main benefits:

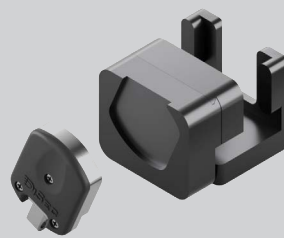
- Anti-pick magnetic key design.
- Supplied with two magnetic keys.
- Extra keys need to be ordered from the factory.

DIMGSG15

OBD BLOCKERS

Supplied with **two keys**

NEW



Protection for OBD sockets, using a magnetic key.

Additional Keys:

- Additional keys available through our in-house workshop.
- If you want to **gain repeat key business and increase your revenues**, get the Disec magnetic keying kit DIKM0P85.

MAGNETIC KEY KIT

It includes:
20x keys.
Instructions.

With the Disec Magnetic Key Kit, your customers will keep coming back to you every time they need to replace a key or get a spare for a new driver.

DIKM0P85



- For DIMG8405/845M, DIMG850/850S, DIMG860 and OBD Blockers

MAGNETIC KEY KIT

It includes:
20x keys.
Instructions.

With the Disec Magnetic Key Kit, your customers will keep coming back to you every time they need to replace a key or get a spare for a new driver.

- Specific for DIMG840



DIKM0P20

MAGNETIC KEY KIT

It includes:
20x keys.
Instructions.

With the Disec Magnetic Key Kit, your customers will keep coming back to you every time they need to replace a key or get a spare for a new driver.

- Specific for DIMG790



DIKM0P55