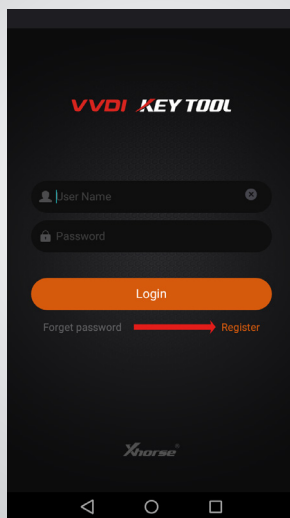


## How To Set Up The VVDI Key Tool App

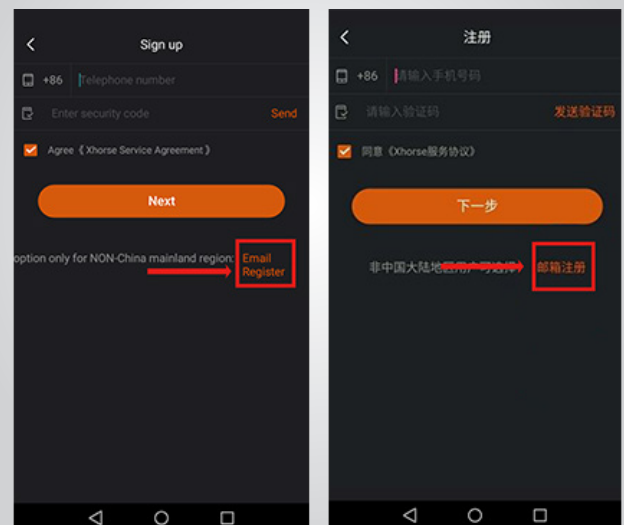
With our step-by-step guide, you will be able to easily **clone ID48 transponders using your VVDI Key Tool.**

**Step 1** ID48 cloning requires an internet connection and so it can only be done **using the free VVDI Key Tool App.** Download the app on your IOS or Android device from the App Store or Google Play Store and then proceed to register it. **If you have already downloaded and registered the app go to the “How To Clone ID48” section of this guide.**

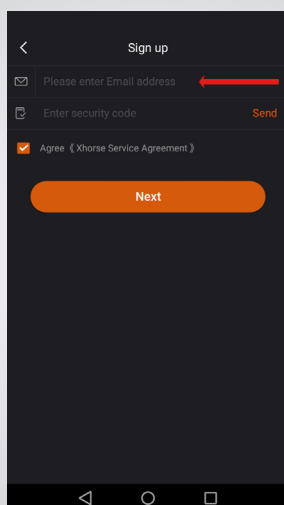
- **Step 2** To sign up for a free account and use the app, open it and press Register.



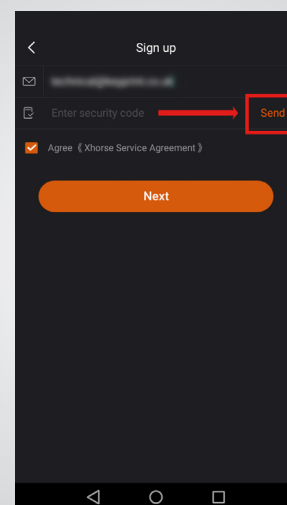
- **Step 3** For UK users, press Email Register. See image on the right if the language is set to Chinese.



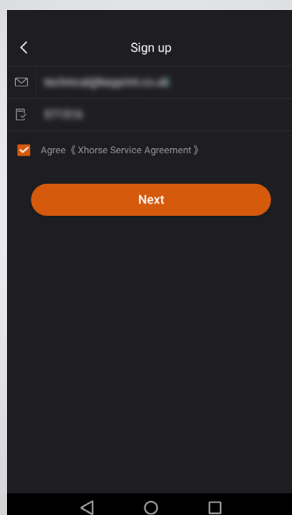
- **Step 4** Enter your email address.



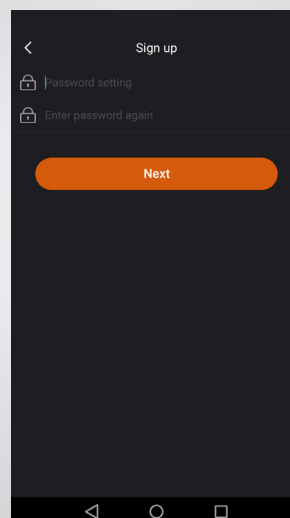
- **Step 5** Press Send to have a security code sent to the email address you have entered.



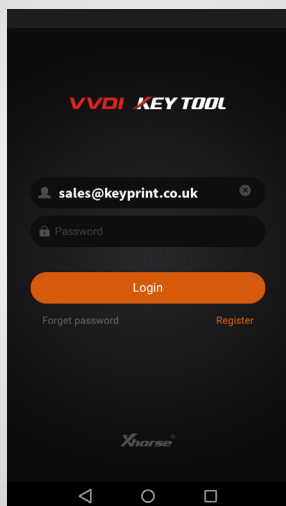
- **Step 6** Enter the security code and press Next.



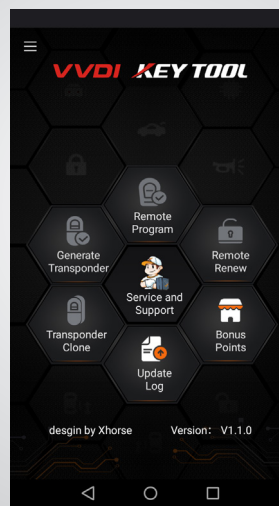
- **Step 7** Set a password for your account and press Next.



- **Step 8** Use your email address (USERNAME) and Password to Login into the app.



- **Step 9** You can now use the VVDI KEY TOOL app.



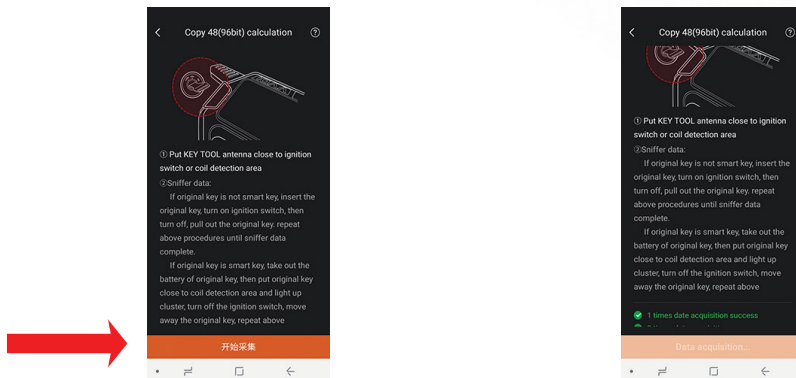
**To use the app you have to it to the VVDI KEY tool. To do so, when you click on any of the function you find in the app, you will be prompted to a screen where you can activate the Bluetooth on your device in order to pair it with the VVDI Key Tool.**

## How To Clone ID48

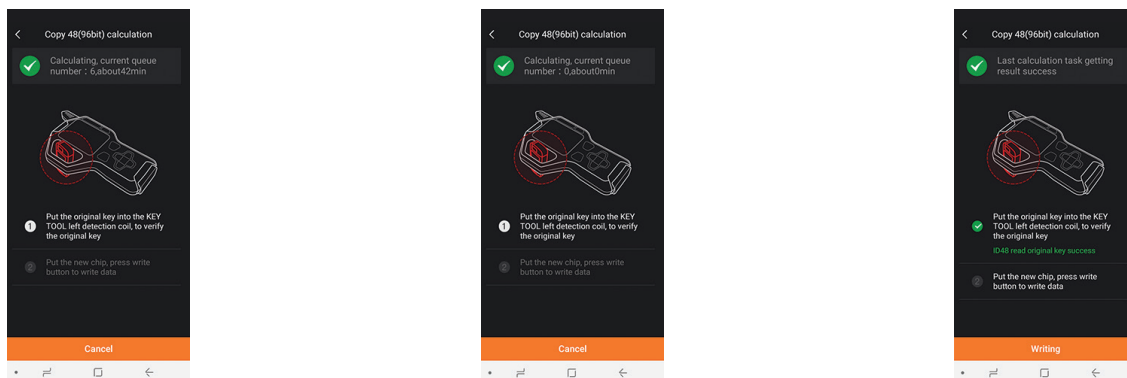
**Step 1** Open the VVDI Key Tool app and connect it to your Key tool via Bluetooth.

**Step 2** Press **Transponder Clone** and select **Copy 48(96bit) calculation - Data Acquisition**.

**Step 3** Press the **Orange Button** at the bottom of the screen to start the procedure. Go to the car and put your VVDI Key Tool next to the ignition. Turn the ignition on and off to sniff the vehicle data removing the key from the ignition after each sniff. Repeat this procedure until all data has been acquired.

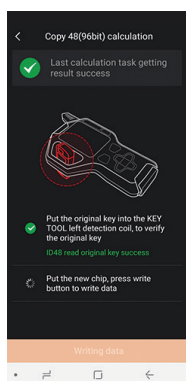


**Step 4** Put the original key into the left transponder coil of your VVDI Key Tool to verify it and send the data for calculation. This step will take some time depending on server load.





**Step 5** Put the blank ID48 transponder chip into the left coil of the Key Tool and press **Write** to write the date onto the new chip.



**Step 6** Your transponder is now ready to start the vehicle.

