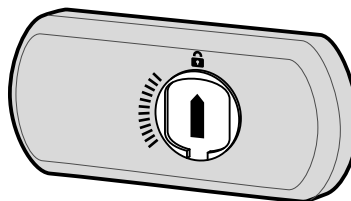
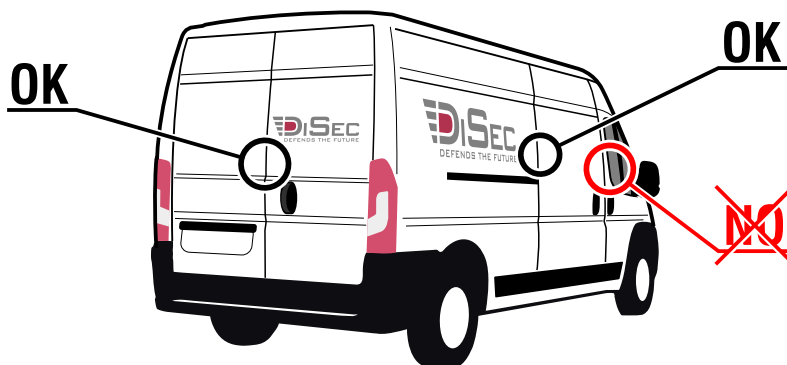


DIMG850



DIMG850S

CORRECT POSITION FOR INSTALLATION



OPTIONAL



GPS TRACKING

TRC01
GPS TRACKER

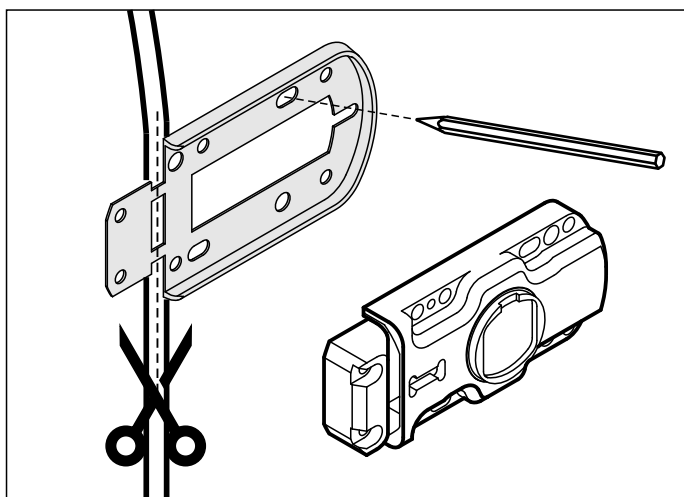


**SMS
ALARM
NOTIFICATION**

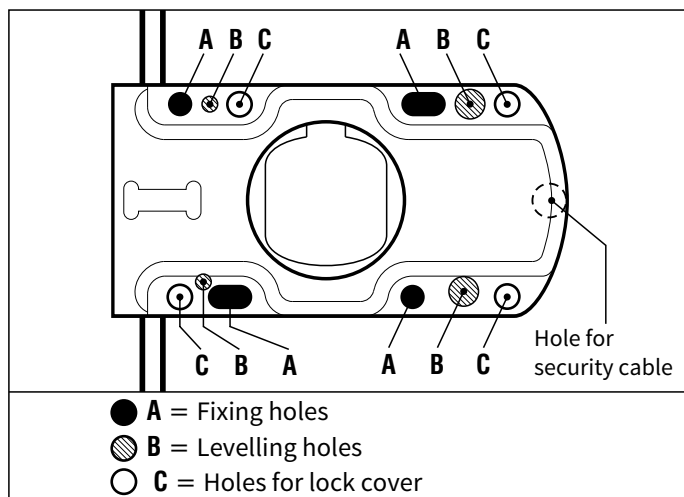
EFR01

ANTI-TAMPERING
DEVICE

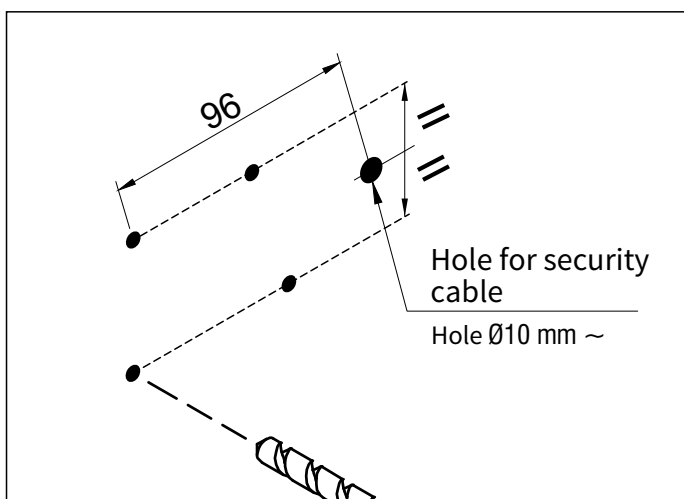




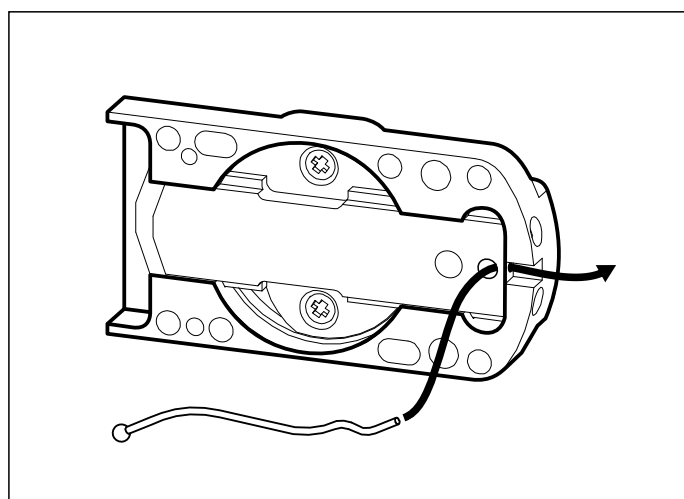
1 Use the plastic gasket provided as a template. Mark the centre of the slotted holes of the gasket and matching part.



2

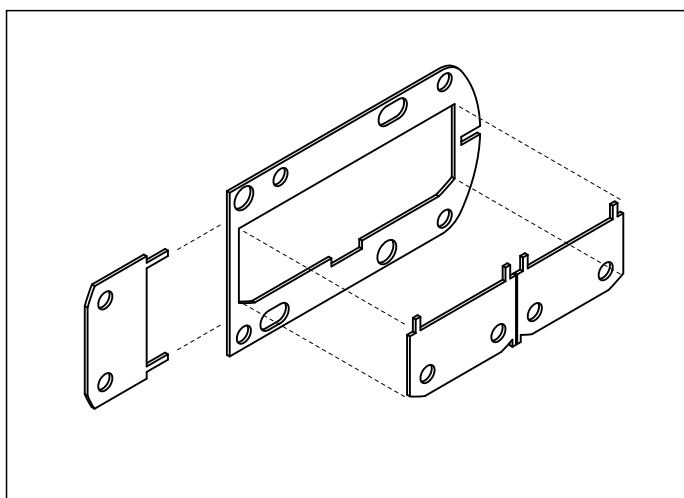


3



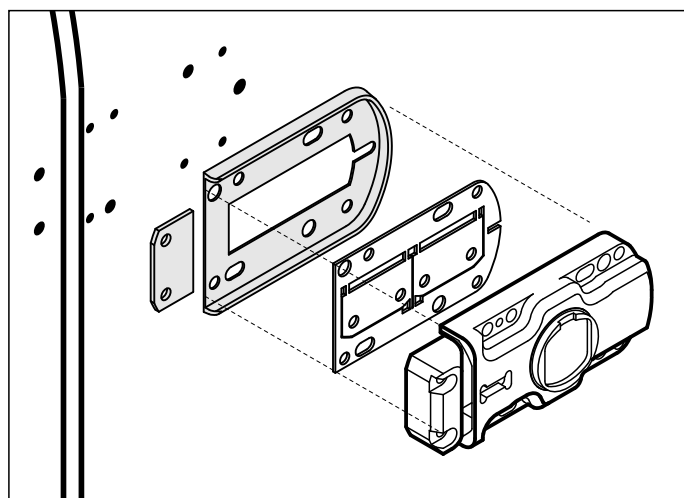
4

Insert the security cable.



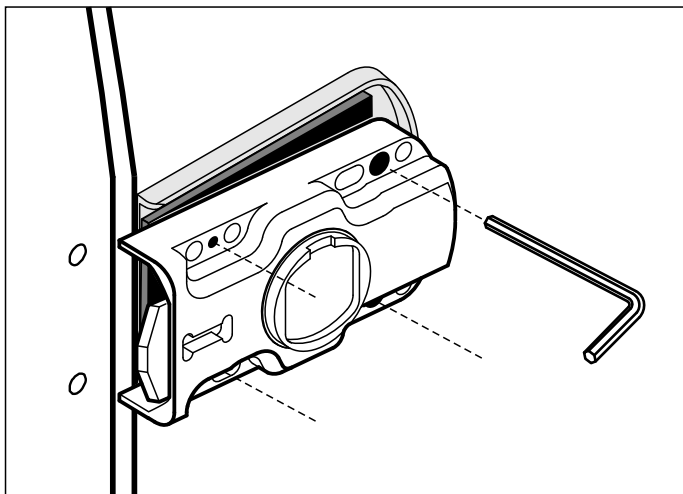
5

If you have to adjust the height of the matching part, cut out the shim as shown above.

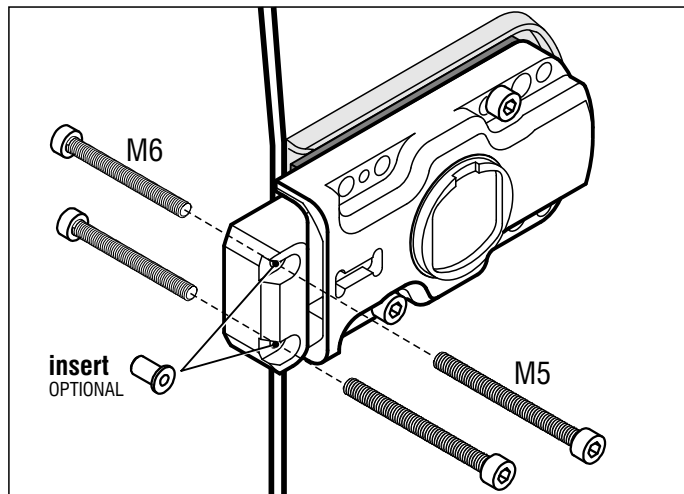


6

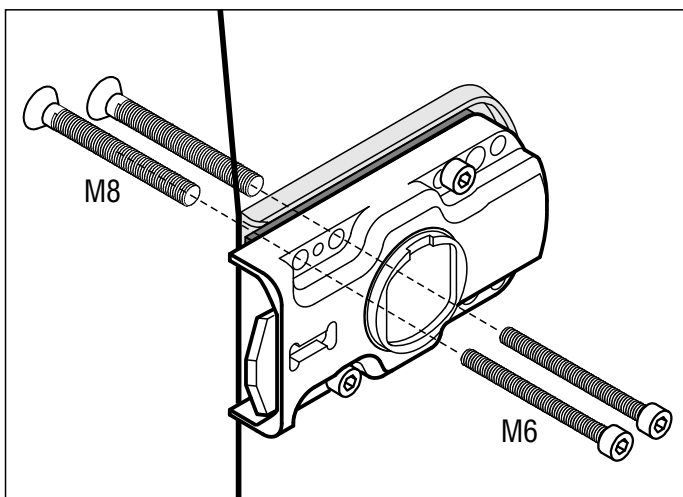
Fix the lock as shown in the image above.



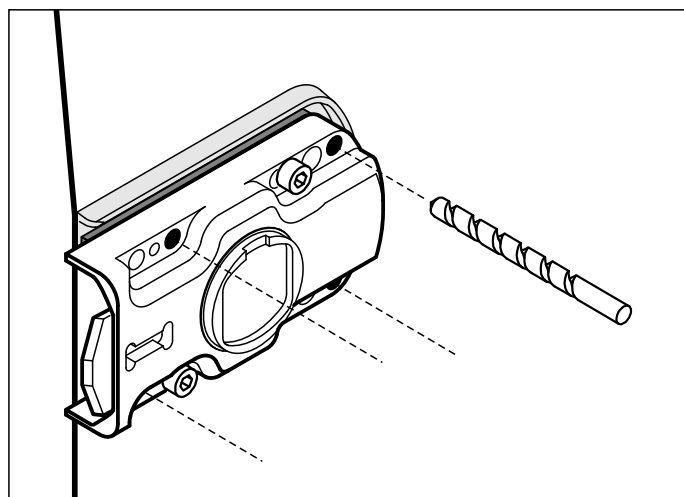
7 If the two surfaces are not levelled, adjust the four grains as needed until you obtain a perfect match.



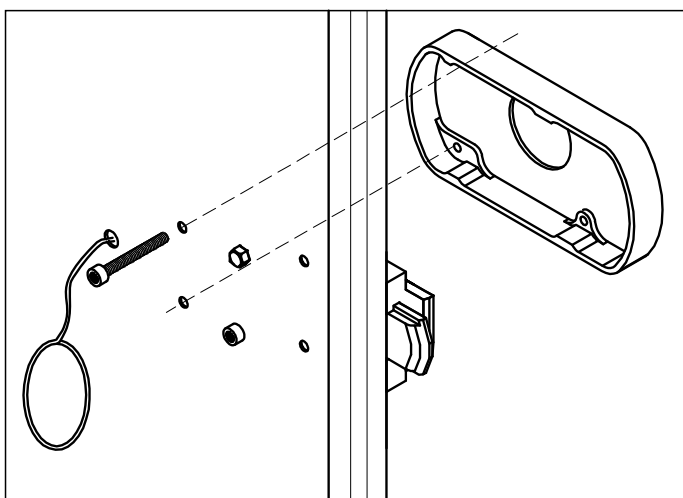
8 Verify the levelling of the surfaces and fix the locking part with the screws M5 from the outside, or the screws M6 from the inside.



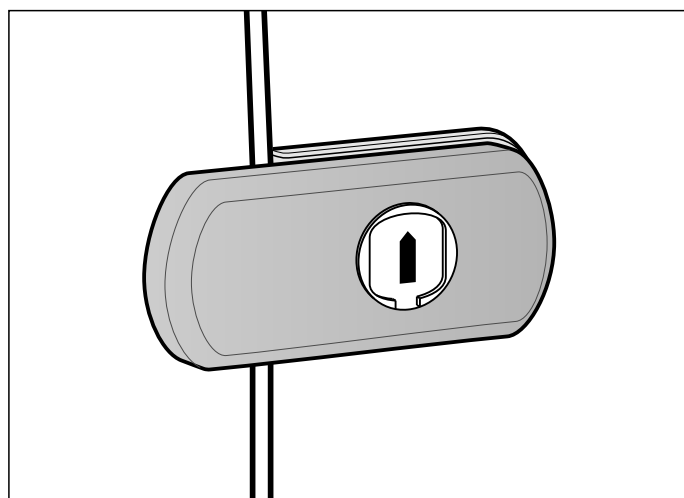
9 Fix the gasket with the screws M6 from the outside or with the screws M8 from the inside.



10 Drill four holes as shown above to fix the cover of the lock.

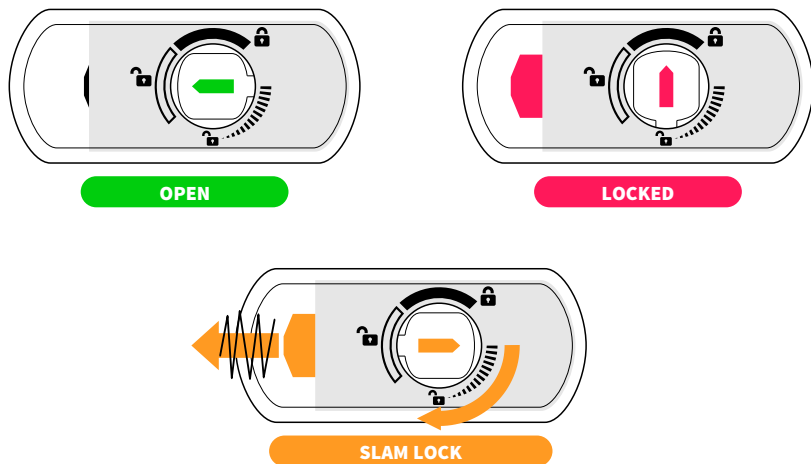


11 Once you have fixed the lock, check that it works and proceed to fix the cover with the round-head screws M6.

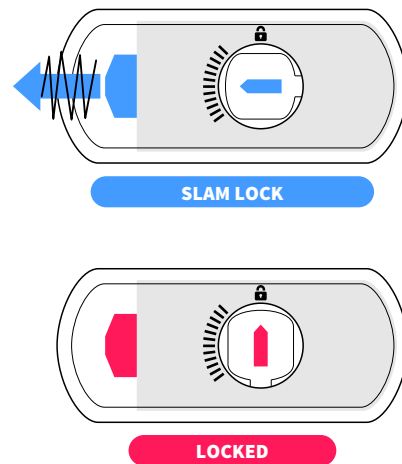
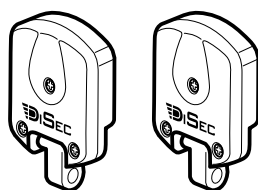


12

LOCKING POSITIONS

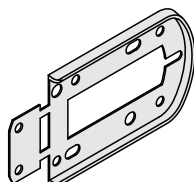
DIMG850

DIMG850S

Slam Lock only


MAGNETIC KEYS INCLUDED


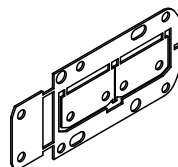
MAGNETIC KEY

2pc.

GASKET AND SHIM INCLUDED


PLASTIC GASKET

1pc.

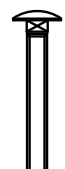
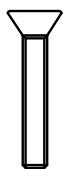
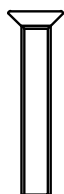


METAL SHIM

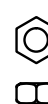
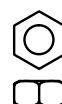
1pc.

SCREWS INCLUDED

M8x80 TSPCC	M6x120 TSPCC	M6x80 TSPCC	M5x100 TCCE	M5x80 ROUND HEAD
2pc.	4pc.	4pc.	2pc.	2pc.



Nut M6	Washer x M6	Nut M5
2pc.	6pc.	4pc.



Insert Threaded M6	Insert Threaded M5	Grano M10x10	Grano M5X10
2pc.	2pc.	2pc.	2pc.



Security cable

